



# INSTRUCTION BULLETIN

No. 9020775  
Machine: M30  
Published: 12-2020  
Rev. 00

**NOTE: DO NOT DISCARD the Parts List from the Instruction Bulletin. Place the Parts List in the appropriate place in the machine manual for future reference. Retaining the Parts List will make it easier to reorder individual parts and will save the cost of ordering an entire kit.**

*NOTE: Numbers in parenthesis ( ) are reference numbers for parts listed in Bill of Materials.*

Installation instructions for **kit number 9020777**

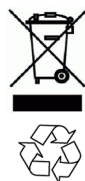
Kit installation must be performed by TennantTrue<sup>®</sup> service or an authorized service provider.

## SYNOPSIS:

This kit contains the parts needed to replace the recovery float sensor on M30 sweeper scrubbers. Please follow step-by-step instructions.

## SPECIAL TOOLS / CONSIDERATIONS: NONE

(Estimated time to complete: 45 minutes)



### PROTECT THE ENVIRONMENT

Please dispose of packaging materials, used machine components such as batteries and fluids in an environmentally safe way according to local waste disposal regulations.

Always remember to recycle.

## PREPARATION:

1. Completely empty the recovery tank.

**FOR SAFETY: Before leaving or servicing machine, stop on level surface, turn off machine, set parking brake, and remove key.**

2. Disconnect the battery cables from the battery.

 **WARNING: Always disconnect battery cables from machine before working on electrical components.**

## INSTALLATION:

1. Open the recovery tank cover.
2. Disconnect the main harness from the existing recovery tank liquid level sensor.
3. Drill a 5/8 in. (16 mm) hole into the side of the recovery tank where the slight indentation (dimple) is located. (Fig. 1)

4. Remove the lock nut and gasket from the new liquid level sensor (1).
5. Route the main wire harness liquid level sensor to where new liquid sensor (1) will be installed and connect the main harness to the new liquid level sensor.
6. Use the lock nut and gasket to install the liquid level sensor (1) and float switch protector bracket (2) into the recovery tank. (Fig. 1)

*NOTE: Position the liquid level sensor so the narrow end of the float mechanism is oriented as shown in Fig. 1.*

7. Test the machine. Observe the area where the new liquid level sensor (1) was installed for leaks. Ensure there is an alert when the recovery tank is full. The liquid level sensor is functioning correctly when there is a recovery tank full alert when the liquid level in the tank reaches the sensor.

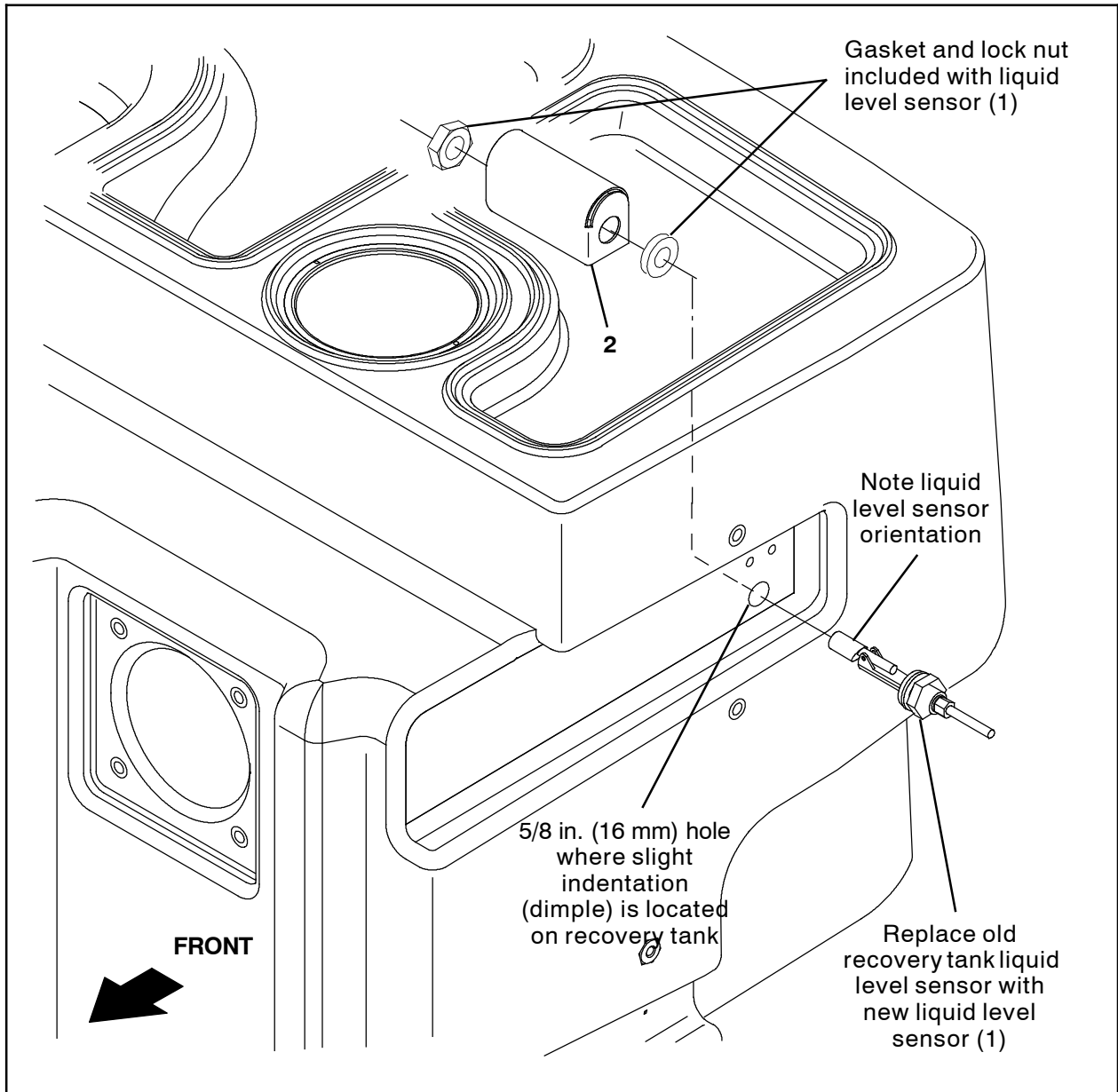


FIG. 1

Bill Of Materials For Sensor Kit Recovery Tank Afmkt Std - 9020777

Ref.	Tennant Part No.	Description	Qty.
1	385685	Sensor, Level, Liq, 14VDC 01A .62- 11	1
2	1019285	Bracket, Protector, Float Switch	1

TENNANT COMPANY  
P. O. Box 1452  
Minneapolis, MN 55440-1452